

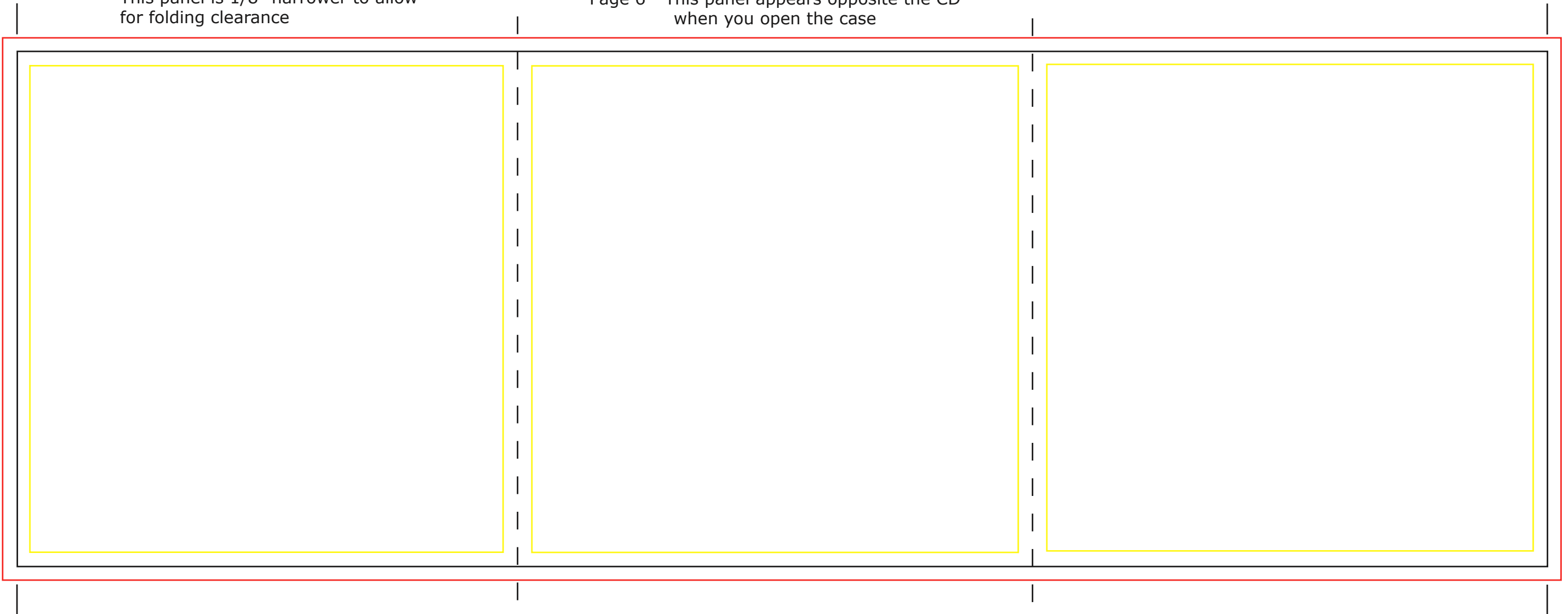
3 Panel Front - Outside Spread

Page 5

Page 1 (Cover)

This panel is 1/8" narrower to allow for folding clearance

Page 6 - This panel appears opposite the CD when you open the case



Please note: Background images should extend at least to the bleed (red) lines. Artwork will be cut at the black lines, so we recommend keeping text and important parts of the artwork within the margin (yellow) lines. When the artwork is completed the template should be removed except for the black crop marks at the corners.



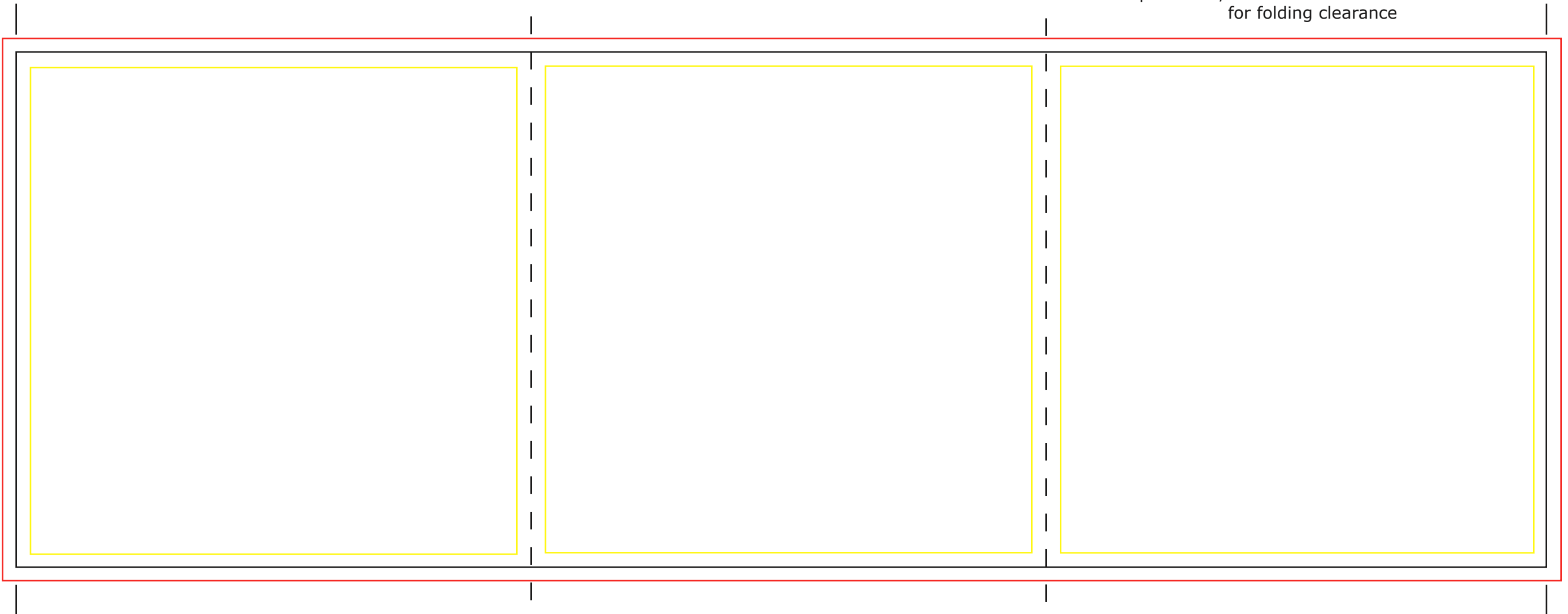
202 Brownlow Ave., Bldg F, Unit T, Dartmouth, N.S., B3B 1T5
Phone 902-469-3423 www.putitoncd.com info@putitoncd.com

3 Panel Front - Inside Spread

Page 2

Page 4

This panel is 1/8" narrower to allow
for folding clearance



Please note: Background images should extend at least to the bleed (red) lines. Artwork will be cut at the black lines, so we recommend keeping text and important parts of the artwork within the margin (yellow) lines. When the artwork is completed the template should be removed except for the black crop marks at the corners.



202 Brownlow Ave., Bldg F, Unit T, Dartmouth, N.S., B3B 1T5
Phone 902-469-3423 www.putitoncd.com info@putitoncd.com